



# MS FELICE

PRINCESS YACHTS • 25.5M • 2016

 **Eastwind**

YACHT CONSTRUCTION • MANAGEMENT • SALES • CHARTER





<b>BUILDER</b>	PRINCESS YACHTS
----------------	-----------------

<b>YEAR</b>	2016
-------------	------

<b>LENGTH</b>	25.5 M
---------------	--------

<b>BEAM</b>	5.74 M
-------------	--------

<b>DRAFT</b>	1.75 M
--------------	--------

<b>GROSS TONNAGE</b>	96 T
----------------------	------

<b>MAX SPEED</b>	34 KN
------------------	-------









A photograph of a modern yacht interior, specifically the main deck. The space is bright and airy, with large windows and a clean, minimalist design. In the foreground, a large white sectional sofa is arranged around a round, dark wood coffee table. The sofa is adorned with several decorative pillows, including one with a dark stripe and a white anchor emblem. The coffee table has a white circular tray on top with a small arrangement of pinecones. In the background, a dining table with white chairs is visible, along with a kitchen area. A large, abstract sculpture hangs on the wall. The overall atmosphere is one of luxury and comfort.

**MAIN DECK**





MAIN SALON



MAIN SALON





HELM STATION





GALLEY





**LOWER DECK**





MASTER CABIN





MASTER CABIN





MASTER BATHROOM





DOUBLE GUEST CABIN





TWIN GUEST CABIN



A photograph of a boat's flybridge deck, viewed from the stern looking forward. The deck is made of light-colored wood planking. In the center, there is a helm seat with a steering wheel and a dashboard with two monitors. To the left and right are large, white upholstered seating areas. In the foreground, there is a large, dark, rectangular table. On the right side, there is a built-in sink and a storage compartment. The boat is on a body of water, and other boats are visible in the distance. A red text box is overlaid in the center of the image.

**FLYBRIDGE**





FLYBRIDGE





FLYBRIDGE



# SPECIFICATIONS

---

## Overview

Yacht Type	Motor Yacht
Builder	Princess Yachts
Year Built	2016
Length	25.5 metres
Beam	5.74 metres
Draft	1.75 metres
Gross Tonnage	96

## Performance & Capacities

Max Speed	34 kn
Cruising Speed	18 kn
Water Capacity	1386 l
Fuel Capacity	6442 l

## Main Machinery

Engines	Caterpillar C32A (2 x 1723 hp)
Generators	27kW 4914 hrs, 14kW 1009 hrs

## Hull & Deck

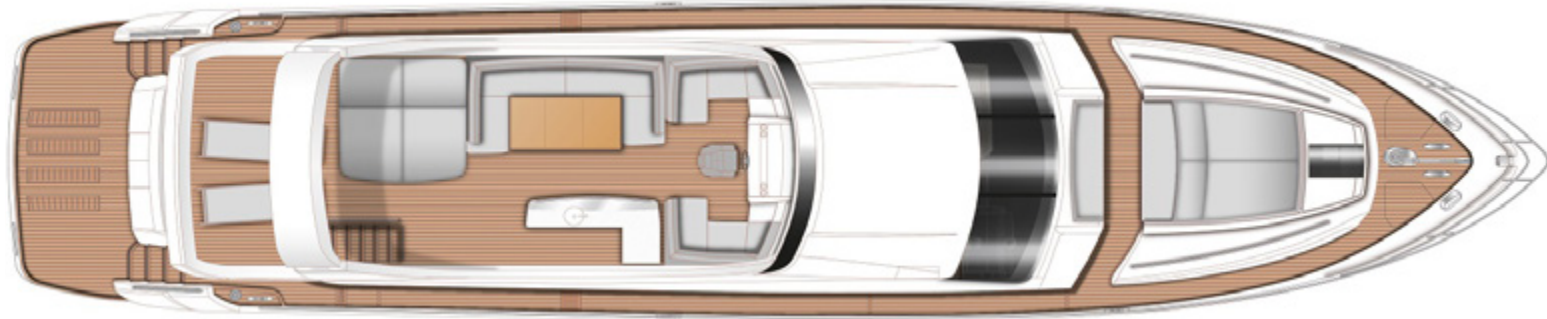
Exterior Designer	Olesinski Ltd.
Interior Designer	Princess Yachts
Hull	GRP
Superstructure:	GRP
Deck Material:	Teak

## Accommodation

Cabins	4+1
Guests sleeping	8
Crew	2



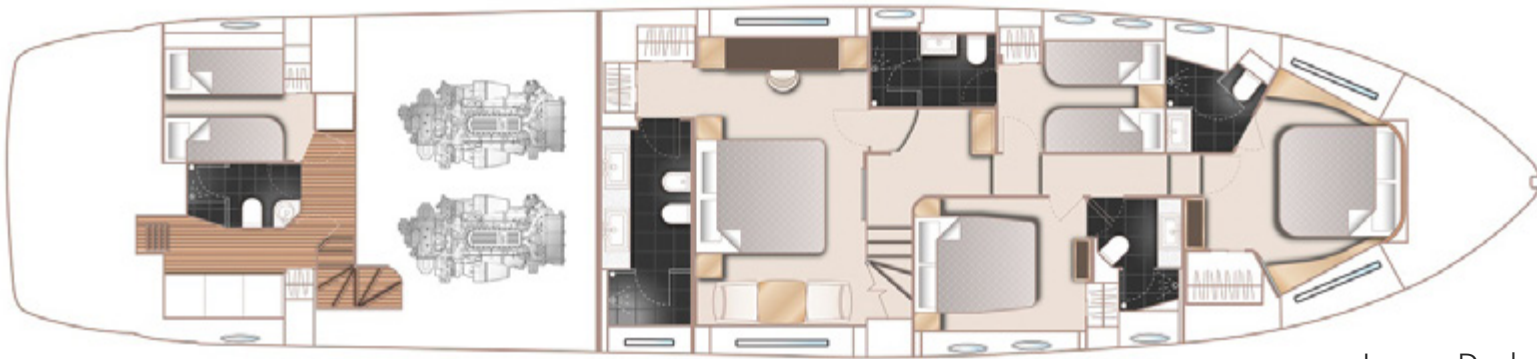
# LAYOUTS



Flybridge



Main Deck



Lower Deck



YACHT CONSTRUCTION · MANAGEMENT · SALES · CHARTER

FORT LAUDERDALE · MONACO · DUBAI

---

FORT LAUDERDALE

+1 954 900 5121

MONACO

+33 786 13 58 26

DUBAI

+971 58 502 0881