


Eastwind



BETELGUESER

MAIN INFORMATION

Builder: Custom
Year Built/Refit: 2012/2020
LOA: 36m
Beam: 8m
Guest: 26
Cabins: 13
Crew: 8
Cruising Speed: 12 knots





































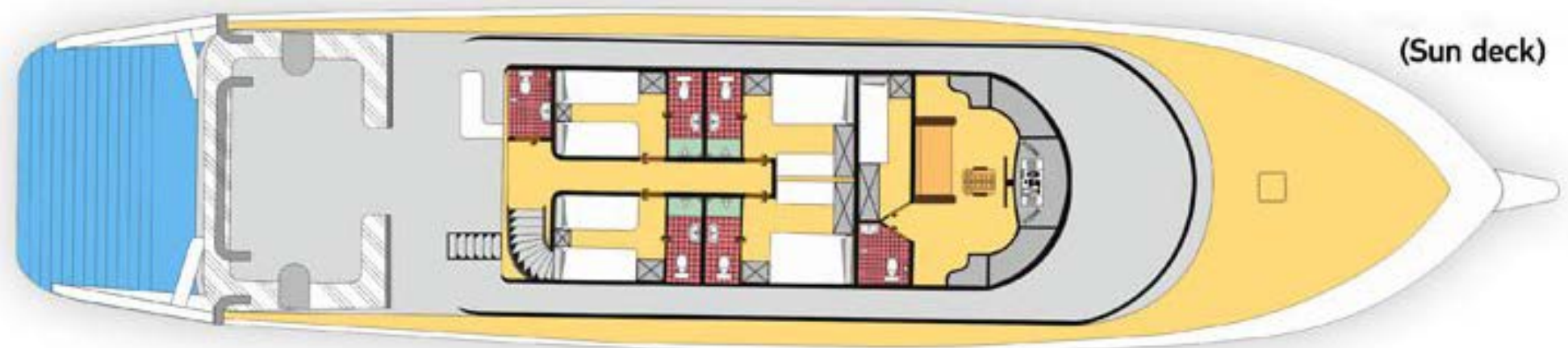
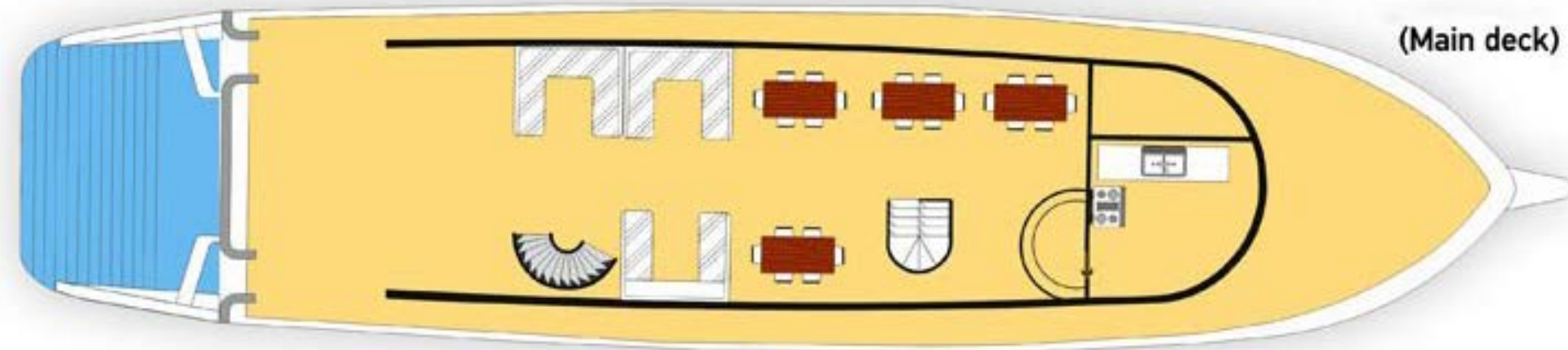
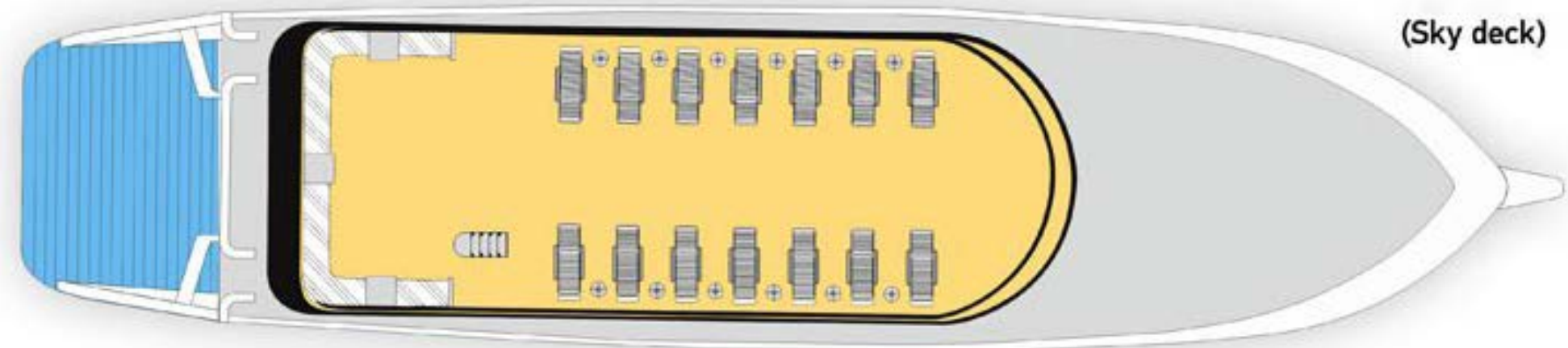












SPECIFICATIONS:

Main

Builder	Custom
Type	Motor Yacht
Subtype	Diving
Year Built/Refit	2012/2020
Flag	Egypt

Hull, Dimensions

LOA	36m
Beam	8m
Draft	2m
Cruising Speed	12 knots

Guests are accommodated in 13 cabins:

- 7 cabins on the cabin deck (6 double cabins with twin beds and 1 double cabin with a double bed)
- 6 cabins on the sun deck (2 double cabins with twin beds and 2 double cabins with double beds)

Each cabin has: a TV, climate control system, a remote control sound system, a mini-bar, a bathroom, a toilet.

Cabin deck:

- 7 guest cabins;
- the engine-room.

Main deck:

- dining area;
- bar, a refrigerator with drinks;
- an air-conditioned and spacious lounge with sofas and tables, two TVs and audio system.

Accommodation

Guests	26
Cabins	13
Crew	8

Engines

Make	MAN
Quantity	2

Dive deck:

- upright with cylinders (25 x 12 l and 6 x 15 l aluminum cylinders);
- shower hoses with fresh water for equipment;
- charging plant;
- 2 diver's ladders.

Sun deck:

- 6 guest cabins;
- half-shaded deck with a bar, sofas and tables for drinks;

Sky deck:

- outdoor sun deck with deck chairs and sofas under the sun-blind;
- captain's plot





YACHT CONSTRUCTION · MANAGEMENT · SALES · CHARTER

FORT LAUDERDALE | MONACO | LONDON | DUBAI | COURCHEVEL

EASTWIND FORT LAUDERDALE
+1 954 900 5121

EASTWIND DUBAI
+971 58 502 0881

EASTWIND MONACO
+33 786 13 58 26